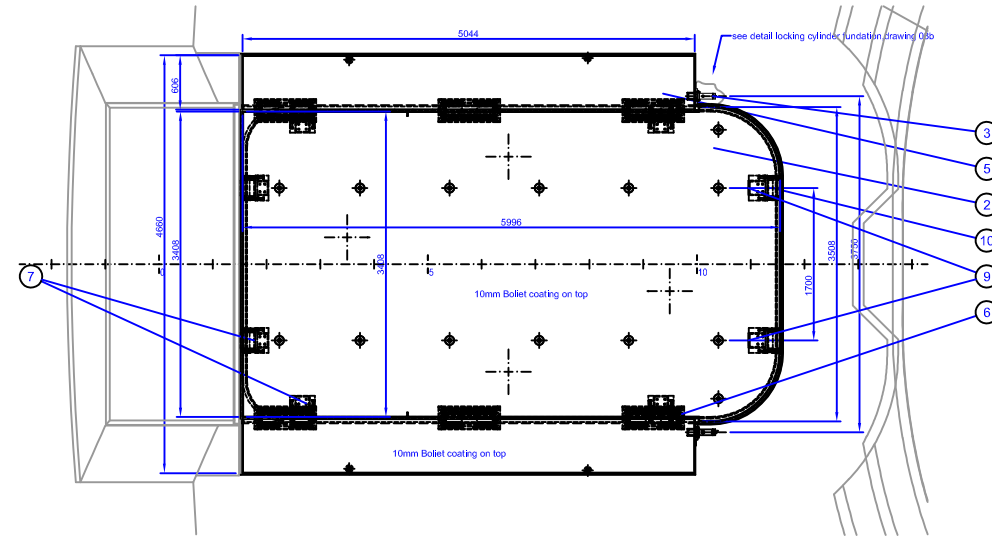
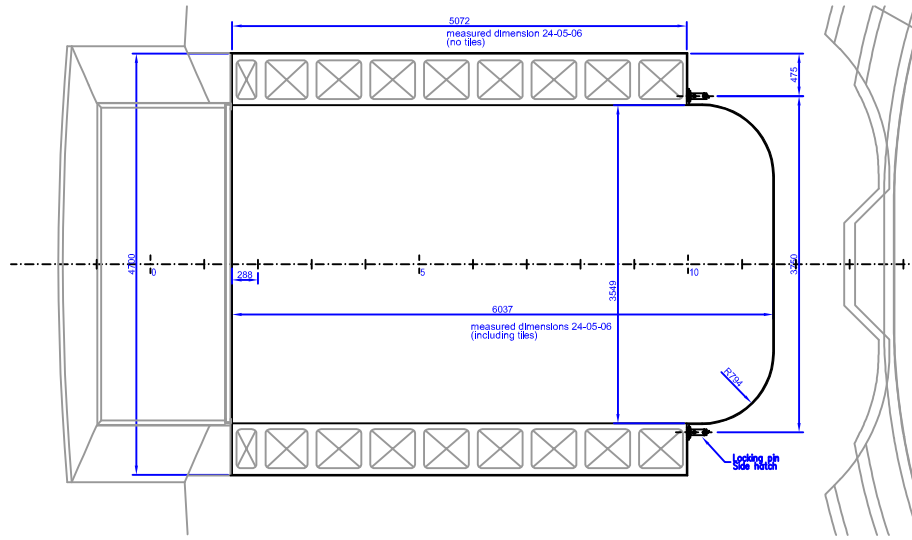
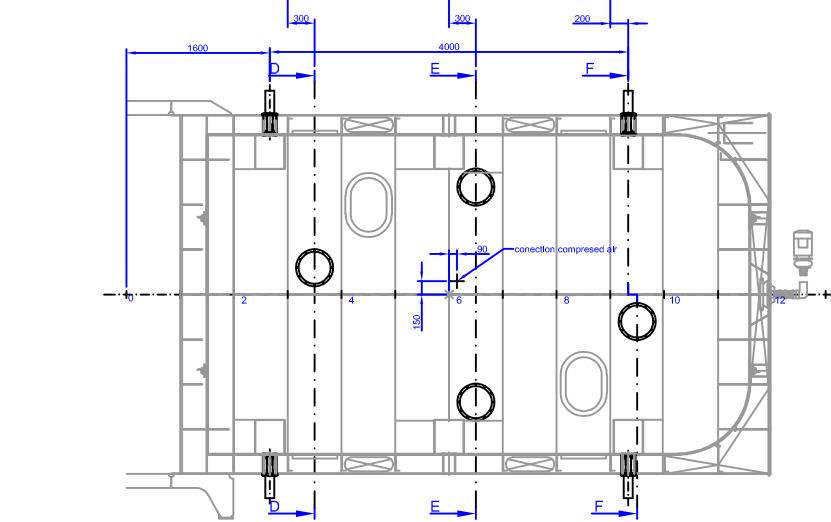
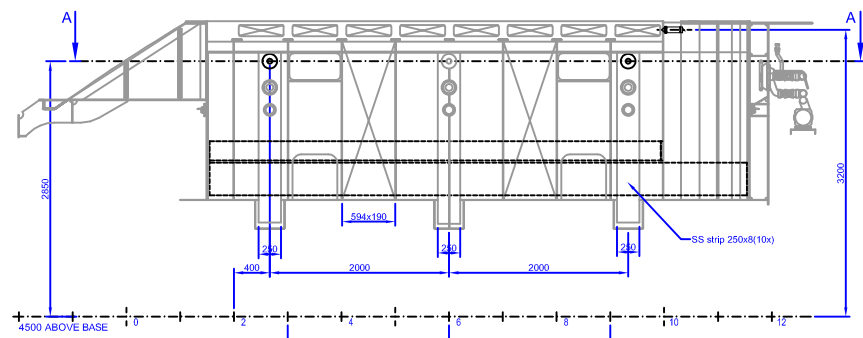


VIEW ON MAIN DECK

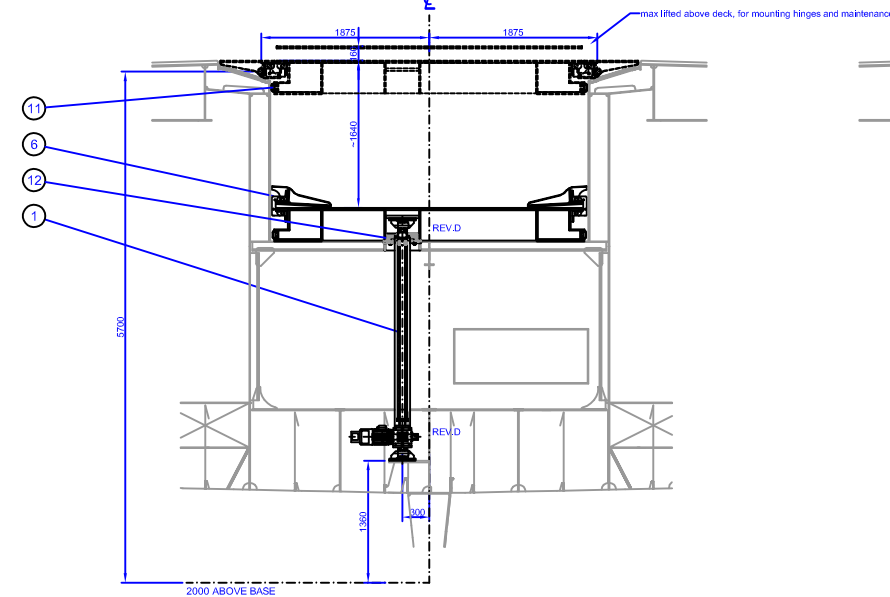


SECTION C-C

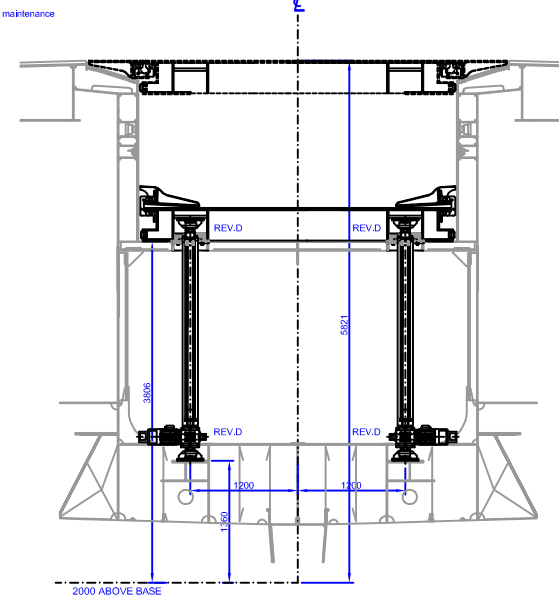


SECTION A-A
view on bottom

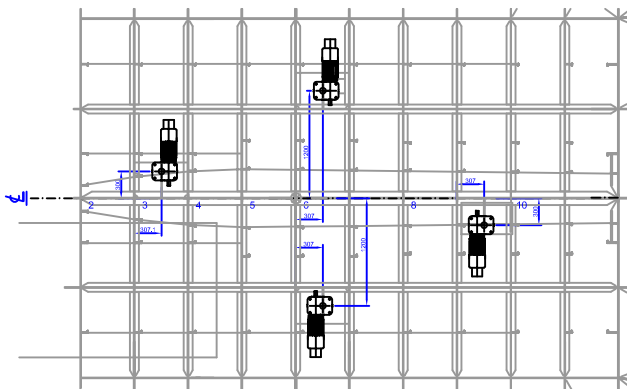
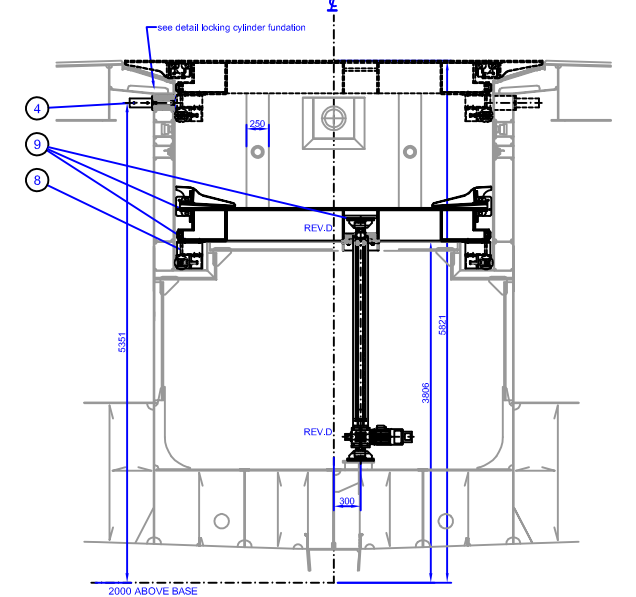
SECTION D-D FR. 3x300mm



SECTION E-E FR. 6x300mm



SECTION F-F



SECTION B-B

SPECIFICATIONS HELI PLATFORM / SWIMMING POOL:

POOL VOLUME:	39 M ³
HELI WEIGHT:	5000 kg
PLATFORM WEIGHT:	4500 kg
MATERIAL:	Aluminium (platform), steel (pool)
DRIVE POWER:	electric
SHIPS POWER:	3 phase 400 V, 60 Hz
LIFTING HEIGHT (max):	1,8 m
LIFTING SPEED:	0,4 m/min
LOWERING SPEED:	0,4 m/min
LOCKING:	hydraulic cylinders

**CORRESPONDING DRAWINGS
HELI PLATFORM / SWIMMING POOL:**

1	platformdrive general
1a	leadthrough part
1b	spindle leadthrough
1c	isolation
2	platform
2a	platform parts
2b	platform (section)
2c	platform valve
3	lockcylinders / fundation
3a	lockfundation
3b	lockcylinder ship
4	hatch
4a	hatch parts
5	hinge
6	guidance wheel
6a	guidance wheel front
7	spindle (VanDriel)
7a	spindle parts
8a	sealing

12	spindle leadthrough	4	-	-	1b
11	sealing	1	-	-	8
10	guidance wheel front	2	-	-	6a
9	defin isolation	1	-	-	1c
8	lockfundation	4	-	-	5a
7	guidance wheel	6	-	-	6
6	hinge	6	-	-	5
5	hatch left and right	2	-	-	4
4	platform lock	4	-	-	3
3	hatch lock	2	-	-	3
2	platform	1	-	-	2
1	drive	4	-	-	7

part nr	object	nr	dimensions	mat. specification / manufacturer	corr. dwg
PROJECT					
SUBJECT					