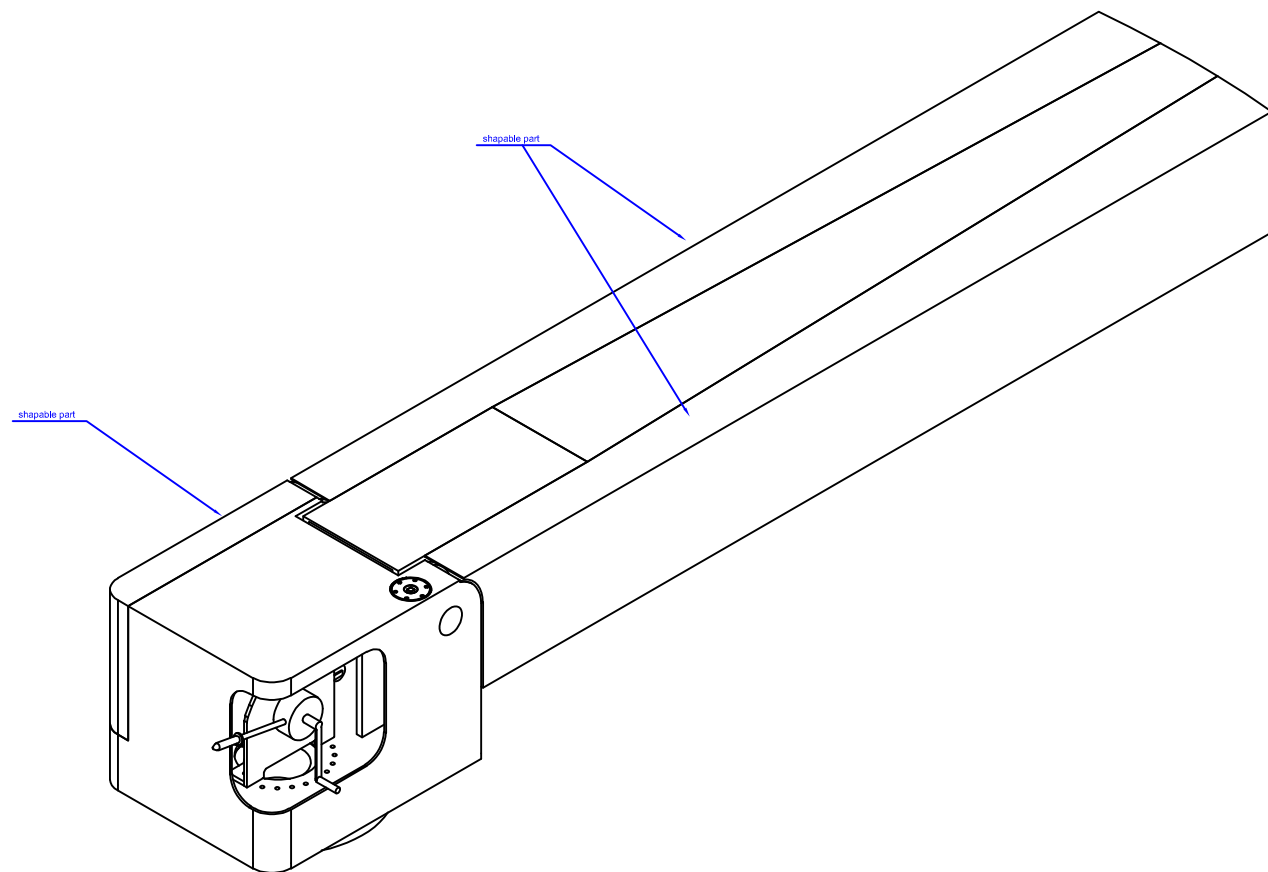
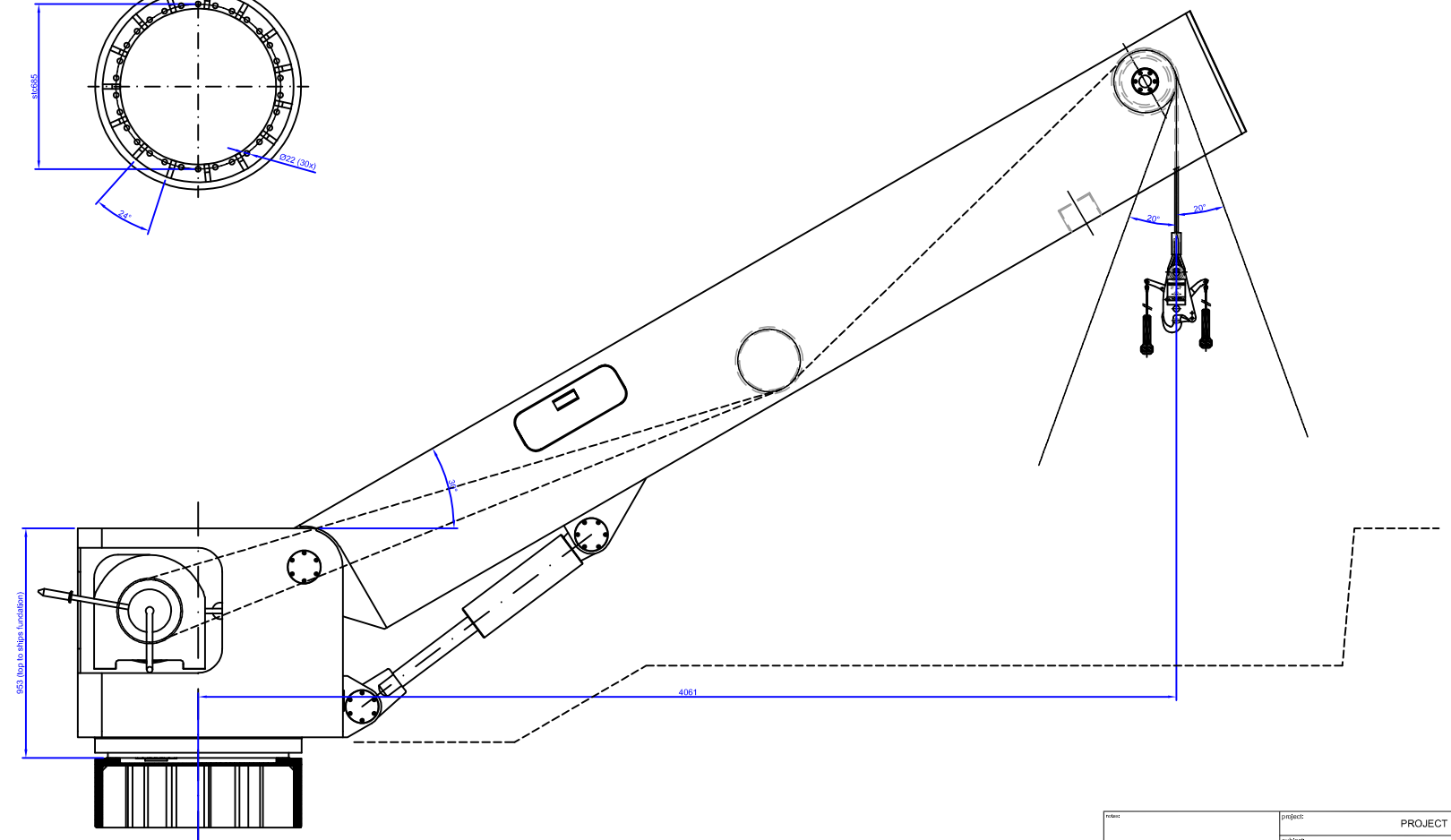
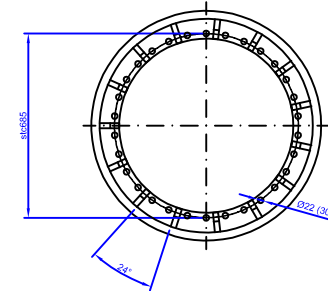
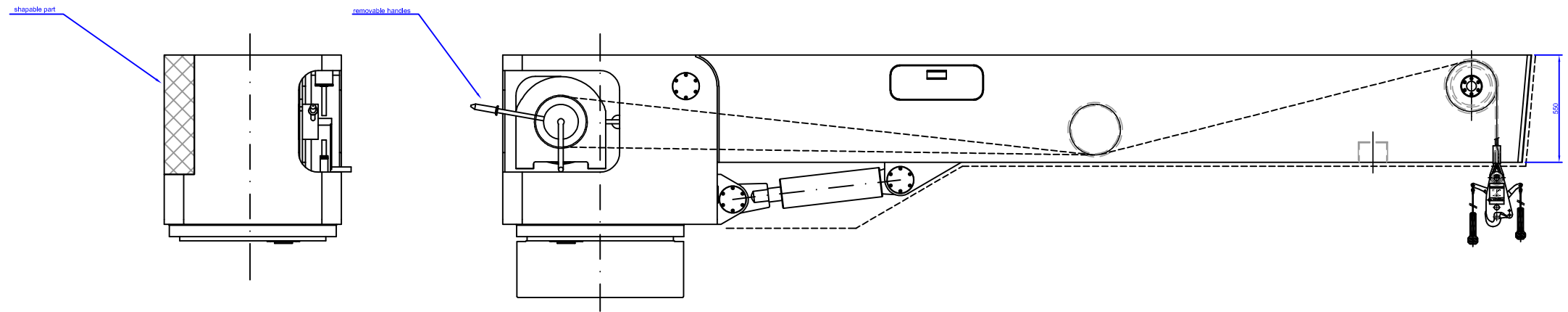
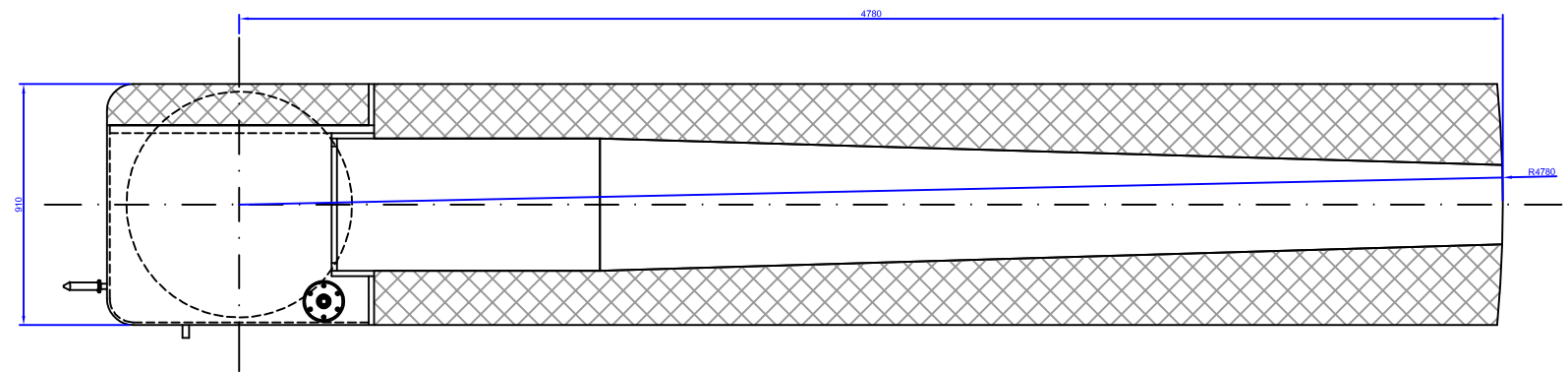


SPECIFICATIONS:

SWL: 2500kg
rotating angle: pending
max. reach: 4,06m
topping angle: 30°
material: steel/ss316

max. heel/trim angle: 20°/10°
testing: according to LSA code

crane total weight: pending
incl. construction piece / filler and paint



PROJECT	
SUBJECT	
Author:	Checked:
Designer:	Code:
Project No.:	Revision:
Scale:	Scale:
Material:	Material:
Quantity:	Quantity:
Remarks:	Remarks: