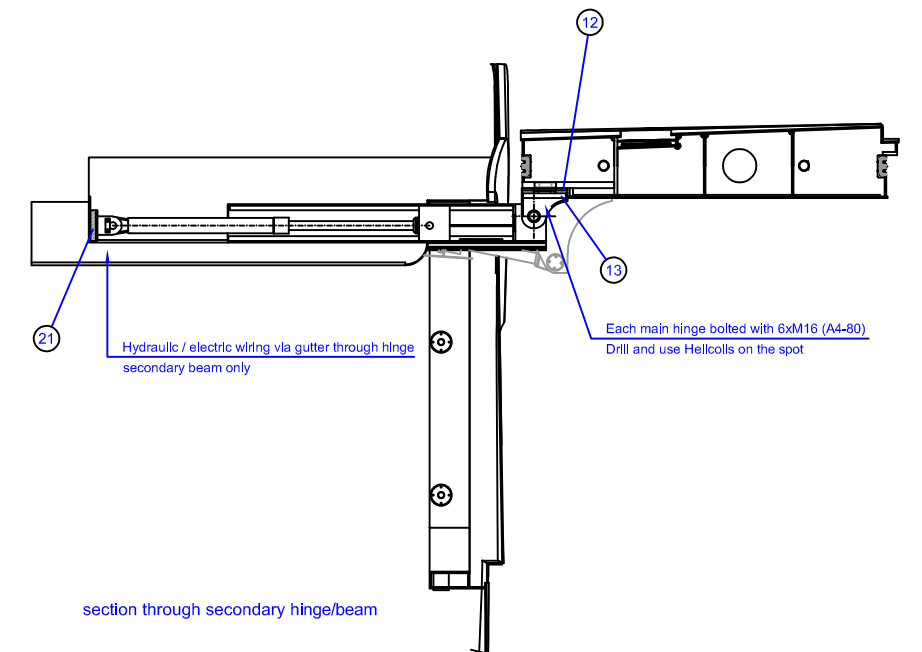
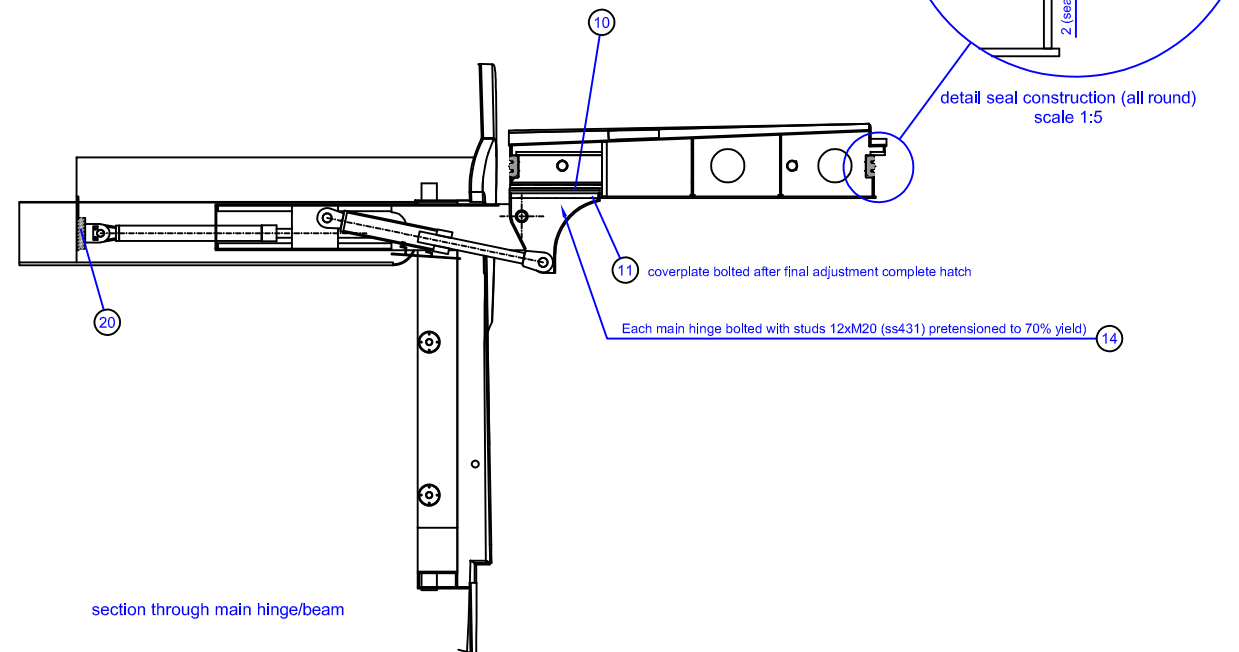
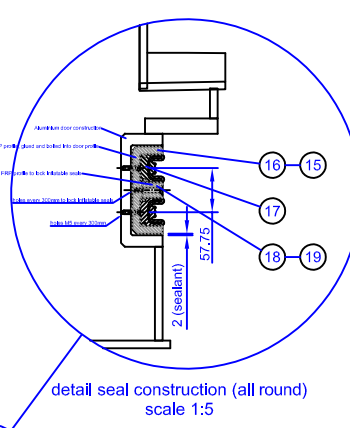
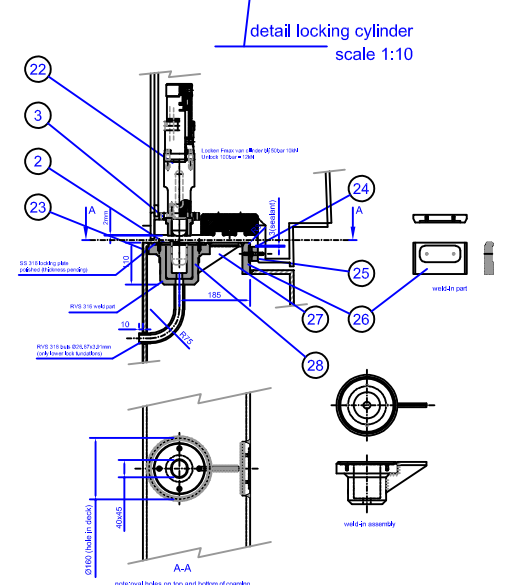


CORRESPONDING DRAWINGS:

00	Build-in
1	General arrangement
1a	GA parts
2	Door welding arrangement
2a	Plates
2b	Frames
2c	Milled parts
2d	Bolting plate
2e	Welding mold
2f	Las volgorde
2g	adiitional parts
3	Main beam welding arrangement
3a	Main beam parts
3b	Main beam welding
3c	Main beam parts
3d	Main Hinge
3e	Foundation plate
3f	Cylinders main beam / see 465316 and 465416
3g	Cylinder closing plate
4	Secondary beam welding arrangement
4a	Secondary beam parts
4b	Secondary beam welding
4c	Secondary beam parts
4d	Secondary Hinge
4e	Cylinder secondary beam / see 465316
4f	Cylinder foundation
5	Wheel assembly main beam
6	Wheel assembly secondary beam
7	Locking cylinder / see 465516



portside: mirrored

part nr	object	nr	dimensions	mat. specification / manufacturer	corr. dwg
1.28	locking pot	11	Ø160x110	ss316	1a
1.27	bracket	11	105x80x10	ss316	1a
1.26	Foundation block	16	140x82x20	ss316	1a
1.25	Touching plate	16	100x37 thickness pending	DelIn Black	1a
1.24	Shim	16	100x37 thickness pending	ss316 polished	1a
1.23	Locking bush	11	Ø70x120mm	Orkot or equivalent	-
1.22	Locking cylinder unit	11	Bore 50; stroke 75mm	VanDriel	7
1.21	Fill plate	2	304x200x35(nom.)	AlMg4,5Mn	-
1.20	Fill plate	2	500x200x35(nom.)	AlMg4,5Mn	-
1.19	Gutter corner center piece	4	Ø536x26,8	FRP	1a
1.18	Gutter center piece	1	26,5x26,8 L=25m (each hatch)	FRP	1a
1.17	Inflatable rubber seal	1	L=approx. 55m (each hatch)	Rubber	-
1.16	Gutter corner piece	4	Ø536x113,5	FRP	1a
1.15	Gutter seal	1	113,5x41,5 L=25m (each)	FRP	1a
1.14	Studs	24	M20 L=330mm	ss431 / 1,4057	1a
1.13	Cover piece	4	see dwg	AlMg4,5Mn	1a
1.12	Fill plate (shim)	2	300x250 t=15mm(nom.)	AlMg4,5Mn	-
1.11	Cover piece	4	see dwg	AlMg4,5Mn	1a
1.10	Fill plate (shim)	2	600x350 t=15mm (nom.)	AlMg4,5Mn	-
1.9	Main beam	2	-	-	3
1.8	Secondary beam	2	-	-	4
1.7	Wheel secondary beam	8	-	-	6
1.6	Wheel main beam	8	-	-	5
1.5	Hatch	1	734x464x10	AlMg4,5Mn	1a
1.4	Hatch	11	394x244x10	AlMg4,5Mn	1a
1.3	Bearing bush	11	Ø70x46	Orkot	1a
1.2	Closing ring	11	Ø135x5	ss316 / polished	1a
1.1	Door	1	-	AlMg4,5Mn	2

notes:

project:		PROJECT	
subject:		SUBJECT	
drawn:	checked:	date:	2ME proj. no.:
code:		client proj. no.:	
date:	scale:	dra. no.:	rev.:
size:			

section through main hinge/beam

section through secondary hinge/beam