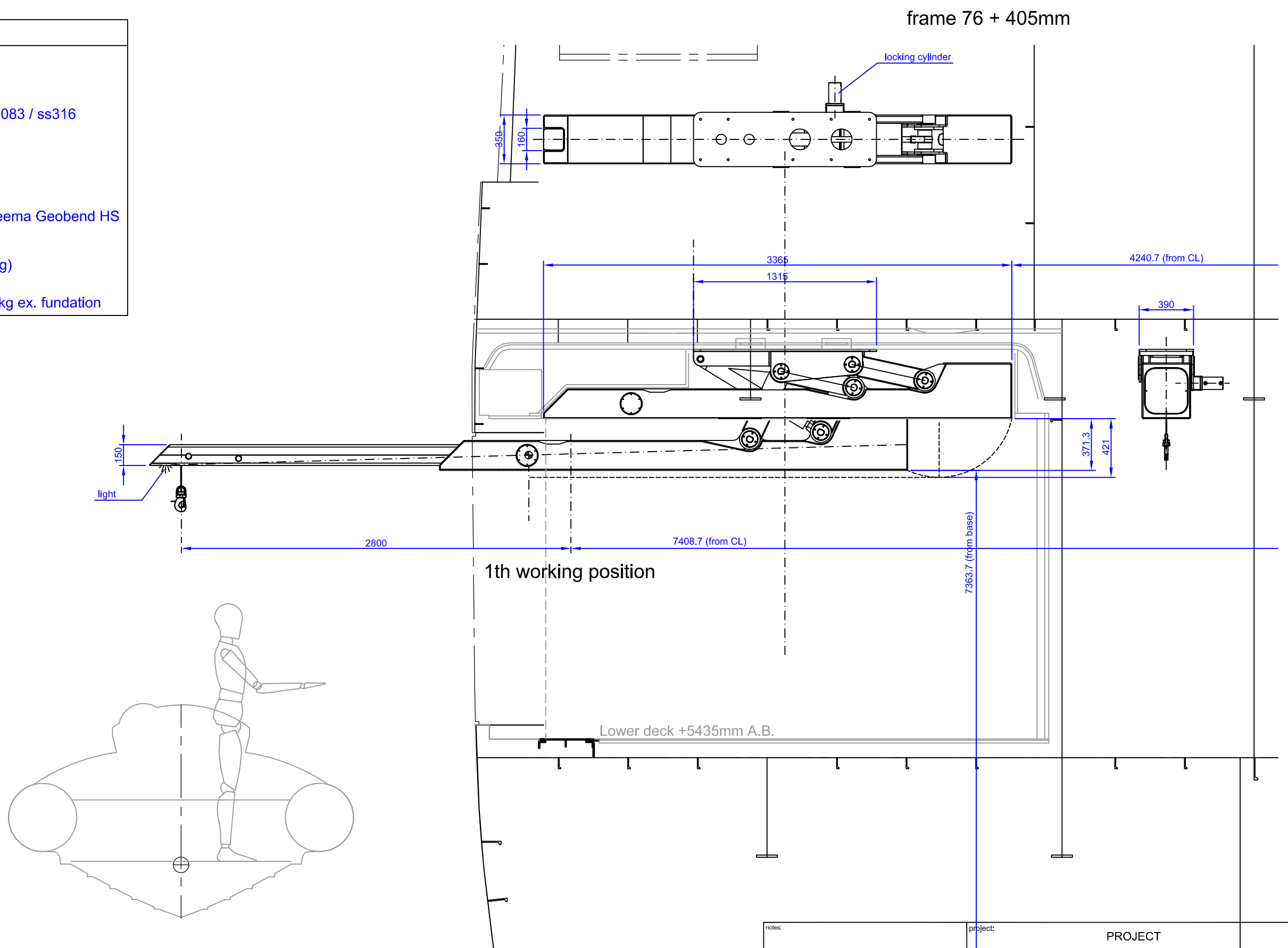


SPECIFICATIONS:

SWL	500kg
max. reach	2800mm
material	Aluminium 5083 / ss316
max. heel/trim angle	5°/2°
max. hoisting speed:	12m/min
max. lowering speed:	12m/min
min. hoisting height:	3 meter
cable:	Ø6mm Dyneema Geobend HS
<u>Test situation</u>	
dynamic test	125% (625kg)
crane weight	approx. 690kg ex. foundation



SWL=500kg	SWL	1,25x500kg
foundation moment (at center foundation)	32kNm	37,4kNm
axial force	11,9kN	13,2kN

notes:		project: PROJECT	
		subject: SUBJECT	
H	drawn:	checked:	client:
G			2ME proj. no.:
F		code:	client proj. no.:
E		CODE	
D			
C			
B			
A			
revision	description	initials	

2ME Special Engineering
 Almerweg 36F
 1671ND Medemblik
 Phone: +31 (0)227 540788
 tweeme@cs4.nl
 web: www.tweeme.nl

date: scale: dw. no: rev. size: